



## Focused Health Solutions

# Focused Information Tracker (FIT)

- Nationally Recognized Analytics
- Unparalleled Technology
- Meaningful Results

At Focused Health Solutions, we understand that comprehensive data collection, coupled with state-of-the-art technology, are the tools every health and cost conscious employer requires and deserves to achieve measurable success in managing healthcare costs.

As one of the leading integrated disease management and wellness companies in the country, we have made multi-million dollar investments to transform our technology platforms to help you achieve the financial results you need.

Our proprietary Focused Information Tracker (FIT) system provides standard care guidelines, robust reporting and outcome capabilities that enable us to more effectively manage participants with standard, structured and up-to-date clinical and educational programs that enable them to manage their own conditions and to lead healthier lives.

Focused Health Solutions can consolidate this information into customized program evaluations to provide you with integrated, accurate and up-to-the-minute analytics, such as participants' clinical outcomes, engagement activities or goals achieved against care plan.

This evaluation includes the measurement of medical and pharmacy costs, hospital admissions, emergency room visits, physician office and outpatient visits, annual preventative care and lab tests, quality of life scores that you can use to measure and track clinical status, quality of life, functional status and recidivism.

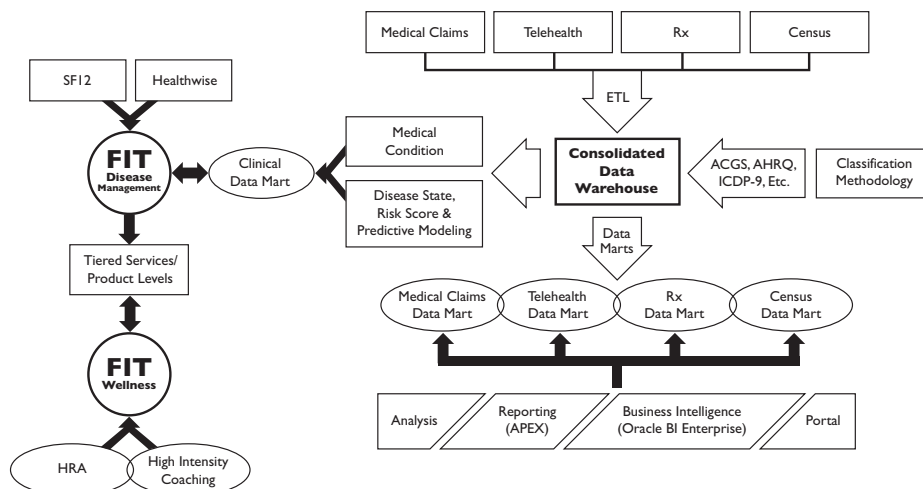
The bottom line is a technological solution that provides you with measurable results, because your participants are receiving personalized health management plans that work.

## What is FIT?

FIT is the acronym for Focused Information Tracker; our exclusive and state-of-the-art database. Focus Health Solutions leverages the capabilities of this proprietary application to record, process and communicate all of the relevant information on each participant's health.

FIT runs on software developed by Siebel CRM, a leader in customer-relationship management solutions, and is powered by Oracle, one of the world's largest enterprise software companies whose database platform organizes this wealth of data to generate relevant and easy-to-use program analyses and reports.

## Integrated Technology Platform





## Clinical Features of FIT

### For Your Organization

- Offers aggregate analysis and reporting statistics, based on your business needs
- Employs an outcome-driven model, incorporating public-health measures provided by the Healthcare Effectiveness Data and Information Set (HEDIS), a tool used by more than 90% of America's health plans to measure performance on important dimensions of care and service
- Measures change and tracks data trends to demonstrate progress and improvement in health for your participants
- Allows for timely, accurate and integrated analytics

### For Your Participants

- Delivers a personalized and confidential approach to health management
- Incorporates health content provided by Healthwise® Knowledgebase, an accredited, online resource containing reliable, up-to-date medical research
- Applies a participant-centric model to create care plans and set intervention schedules, based on your participant's actions and behavioral changes over time
- SF12 Quality of Life Survey, which is recognized as the industry standard in identifying and promoting actions in your participants that have proven successful in improving health

### Effective & Personal Intervention Plans

We conduct multi-condition risk assessments with every participant at numerous points in the progress of their personalized care plans. Responses to these assessments are entered into our Focused Information Tracker. In accordance with Health Insurance Portability & Accounting Act (HIPAA), only specific information is shared with participants, but aggregate results are used to build a detailed clinical profile.

Our personal intervention programs are developed to work jointly with physician care plans and provide you, the employer, with high-level reports that chart your return on investment. Participant interventions can be educational support while other participants may require close and frequent one-on-one clinical coaching. We use our technology platform to determine the best approach to care.



**focused health solutions**

